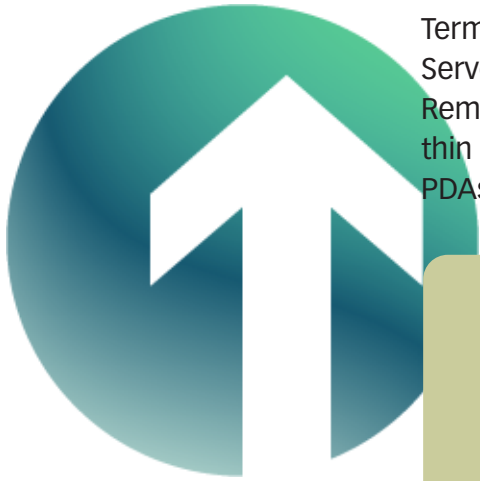
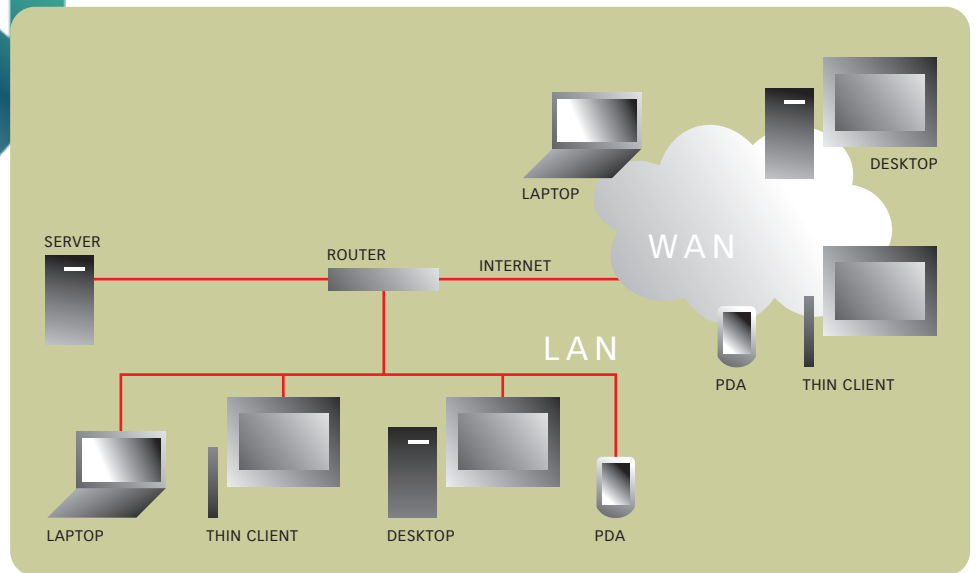


TERMINAL SERVER PRO 1.3



Terminal Server allows a Windows® XP and Windows® Small Business Server 2003 to host multiple remote desktop sessions. It supports Remote Desktop Protocol (RDP) versions 4.0, 5.0, 5.1 and 5.2-enabled thin clients including terminals, Internet/Information Appliances and PDAs connect to a host PC to run Windows® applications.



FEATURES:

Multiple Client Support

Delivers Windows GUI to users of Windows and Unix/Linux-based terminals and thin client communication appliances.

Microsoft Remote Desktop Client Compatible

Elusiva Terminal Server works with existing RDP enabled clients for Windows and other operating systems.

Disconnect Support

Allows users to disconnect from a session without logging off. The can users to leave an active session and then reconnect to the existing session from another machine at another time.

Multiple Active Users Support

Supports multiple simultaneous logon sessions from different desktops. This enables users to log on to multiple Terminal Servers or a single Terminal Server multiple times to do multiple tasks.

Automatic Session Reconnection/ Session Resume

Session will remain active and even automatically reconnect when clients are disconnected from the server for a period of time.

Cut and Paste Support

Terminal Server supports Windows clipboard allowing copy and paste between the client and the server.

Local Devices Support

Users have ability to connect local devices such as serial and parallel ports, disks, printers and sound to the Terminal Server desktop.

Centralized Applications Installation and Update

Administrators install applications once at the Terminal Server and provide access immediately to all connected clients.

Messaging Support

Administrators have the capability to alert users to system shutdowns and upgrades or new application postings.

Remote Control Administration

Any user of Terminal Server with administrative privileges and access to the administrative utilities on the Terminal Server can remotely manage the Terminal Server.

Encrypted Communications

Terminal Server communication is encrypted (by default) on the wire, assuring secure transfer of information.

REQUIREMENTS:

Hardware

Networked computer with 600-megahertz (MHz) Pentium III-compatible or faster processor; 1-gigahertz (GHz) or faster CPU recommended.

Operating System

Microsoft Windows® XP
Windows® Small Business Server 2003.

CONTACT:

Elusiva
One Great Neck Road
Great Neck, New York 11021
516.858.7980
www.elusiva.com
sales@elusiva.com